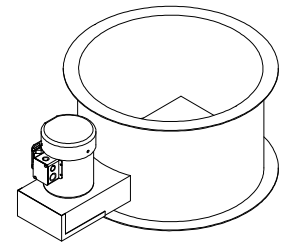
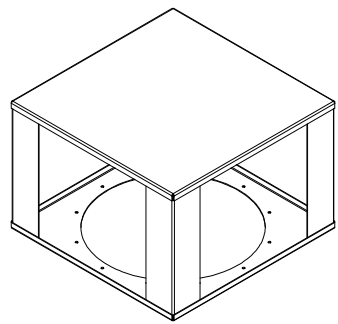


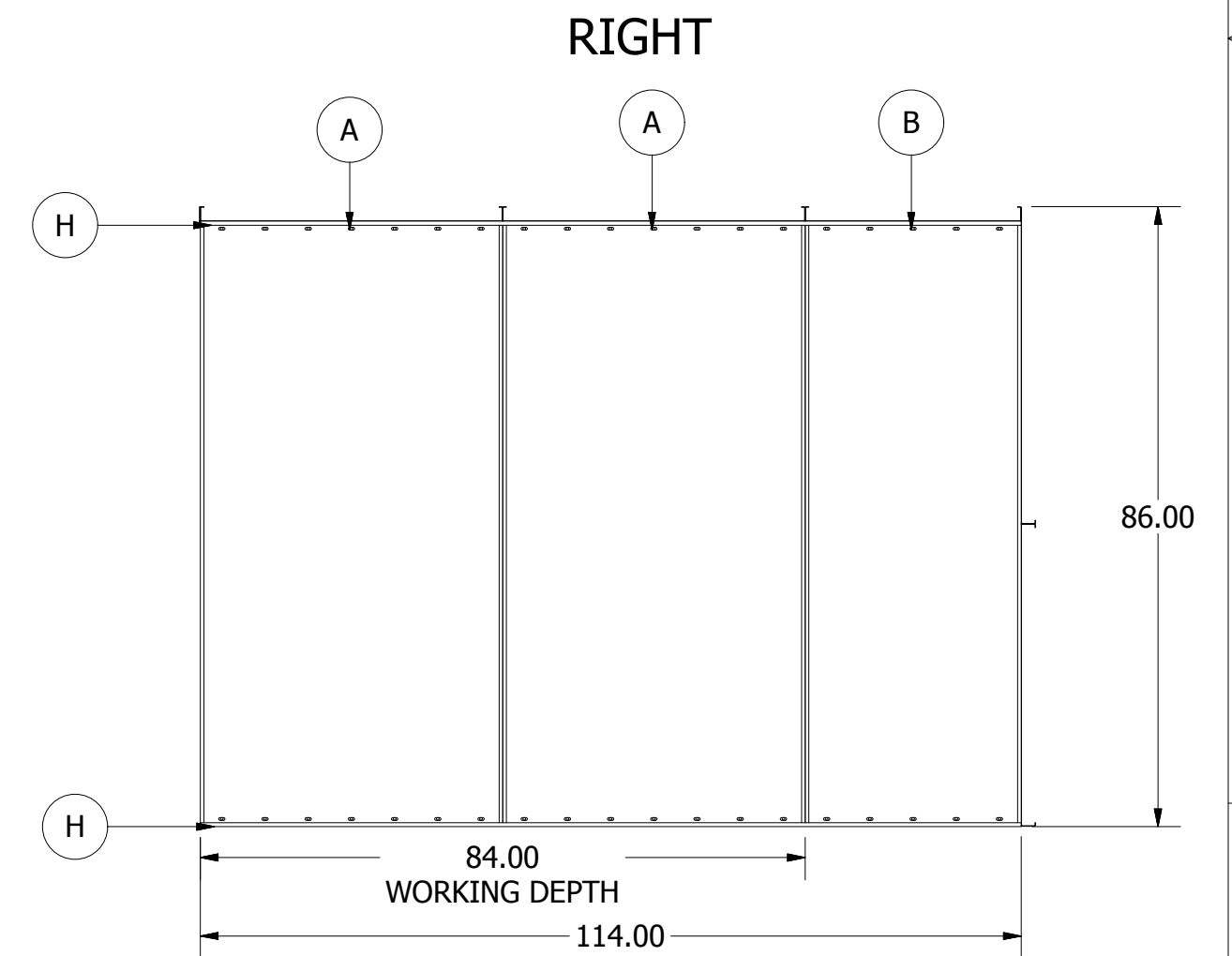
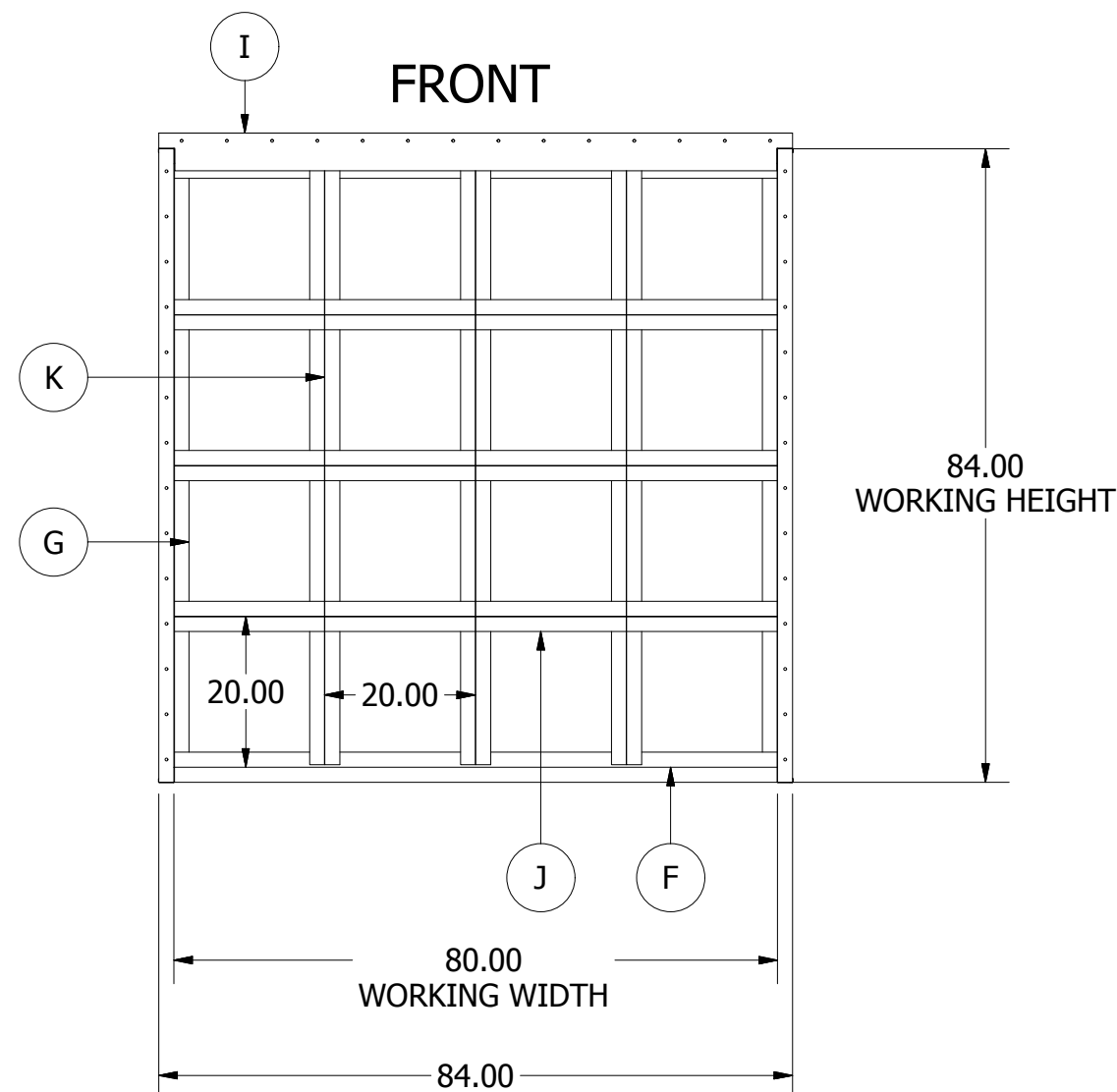
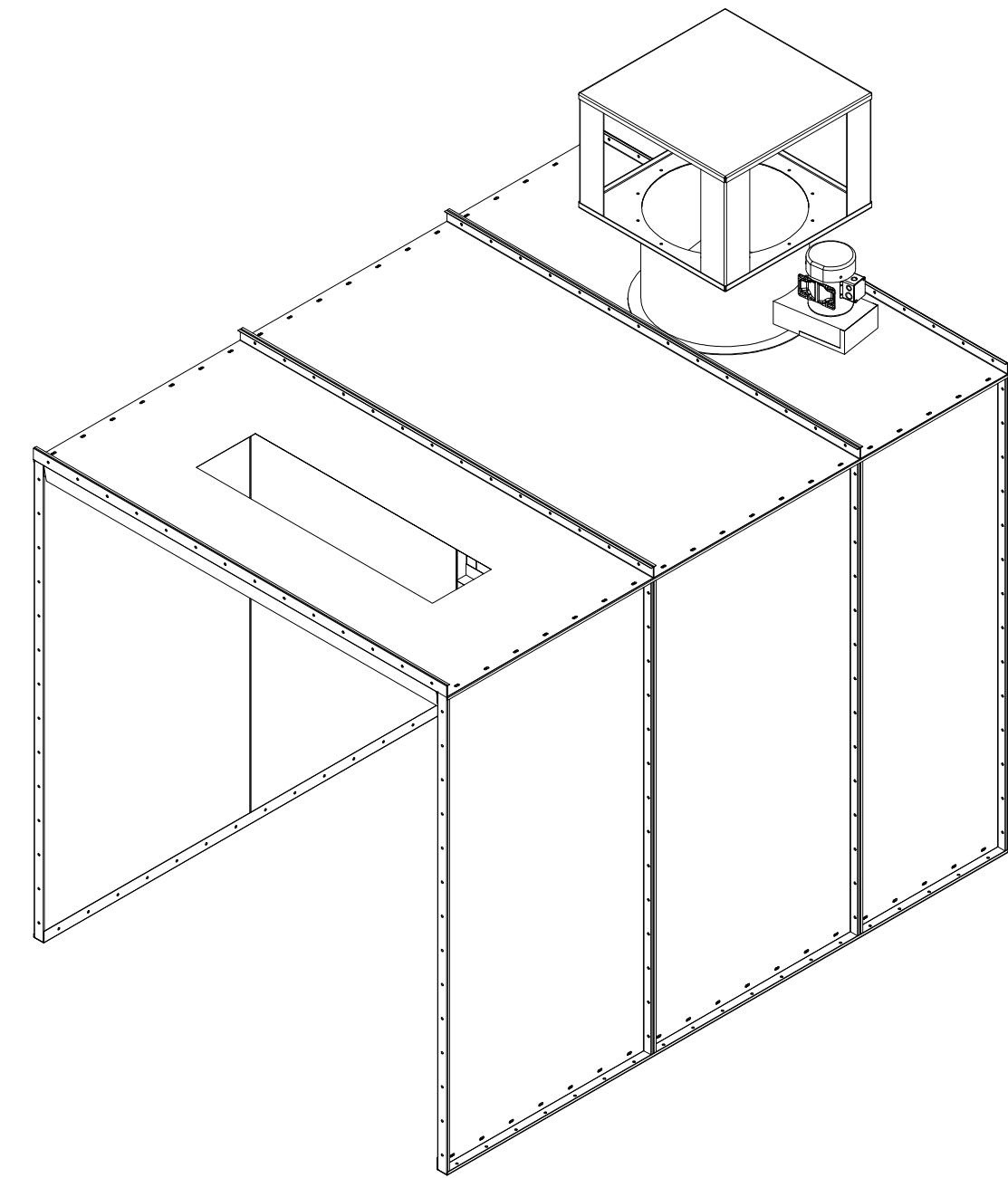
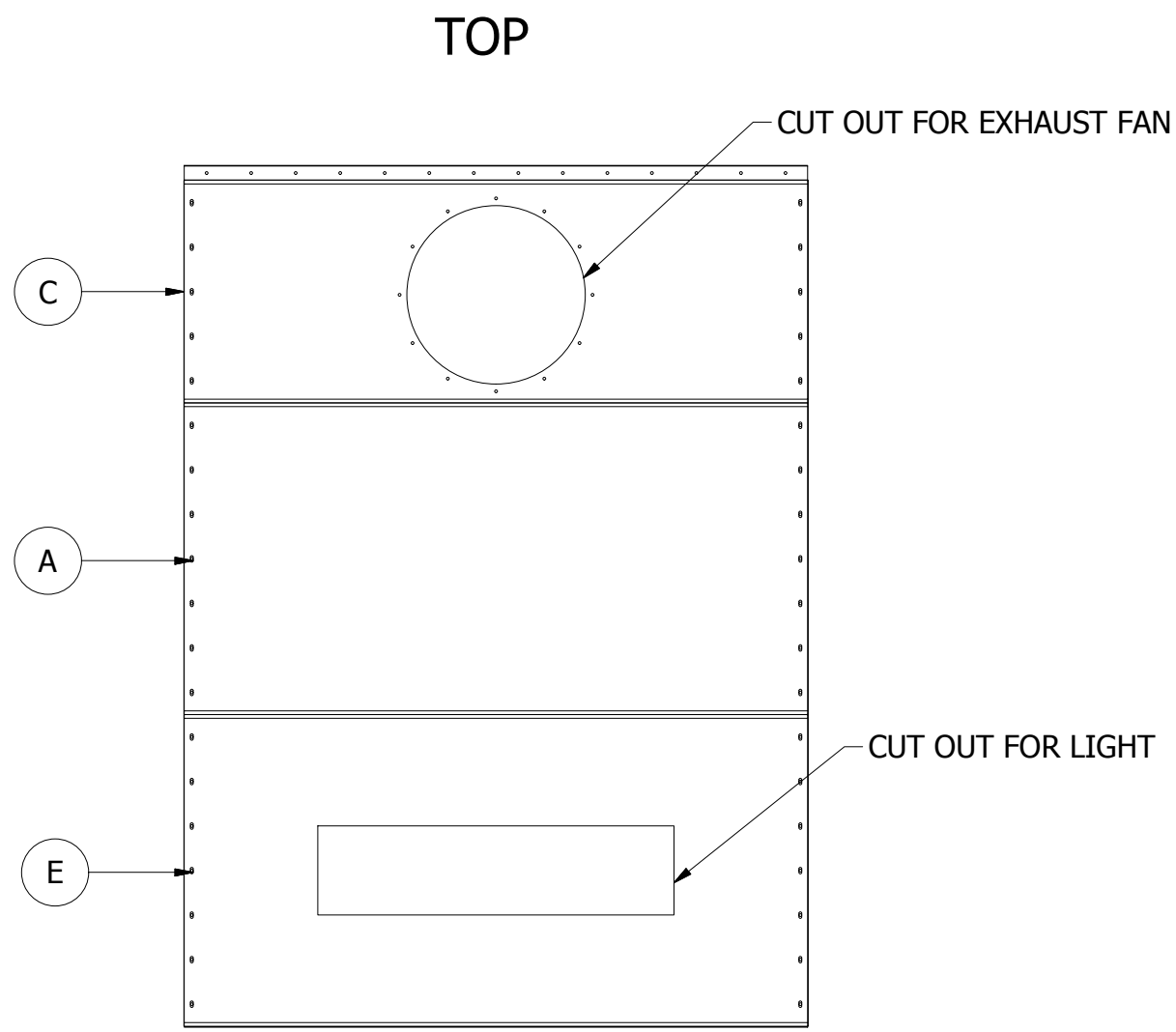
PARTS LIST		
ITEM	QTY	PART NUMBER
A	6	42 X 84
B	2	30 X 84
C	1	30 X 84 FAN
D	1	44 X 84
E	1	42 X 84 LIGHT
F	2	HORIZONTAL PLENUM
G	2	VERTICAL PLENUM
H	4	114 TRIM
I	1	FIRE GAURD
J	12	19.75 DIVIDER
K	3	79.75 DIVIDER
L	1	FAN ASSEMBLY
M	1	FILTER BOX



24" TUBE AXIAL FAN WITH TEFC MOTOR



FILTER BOX



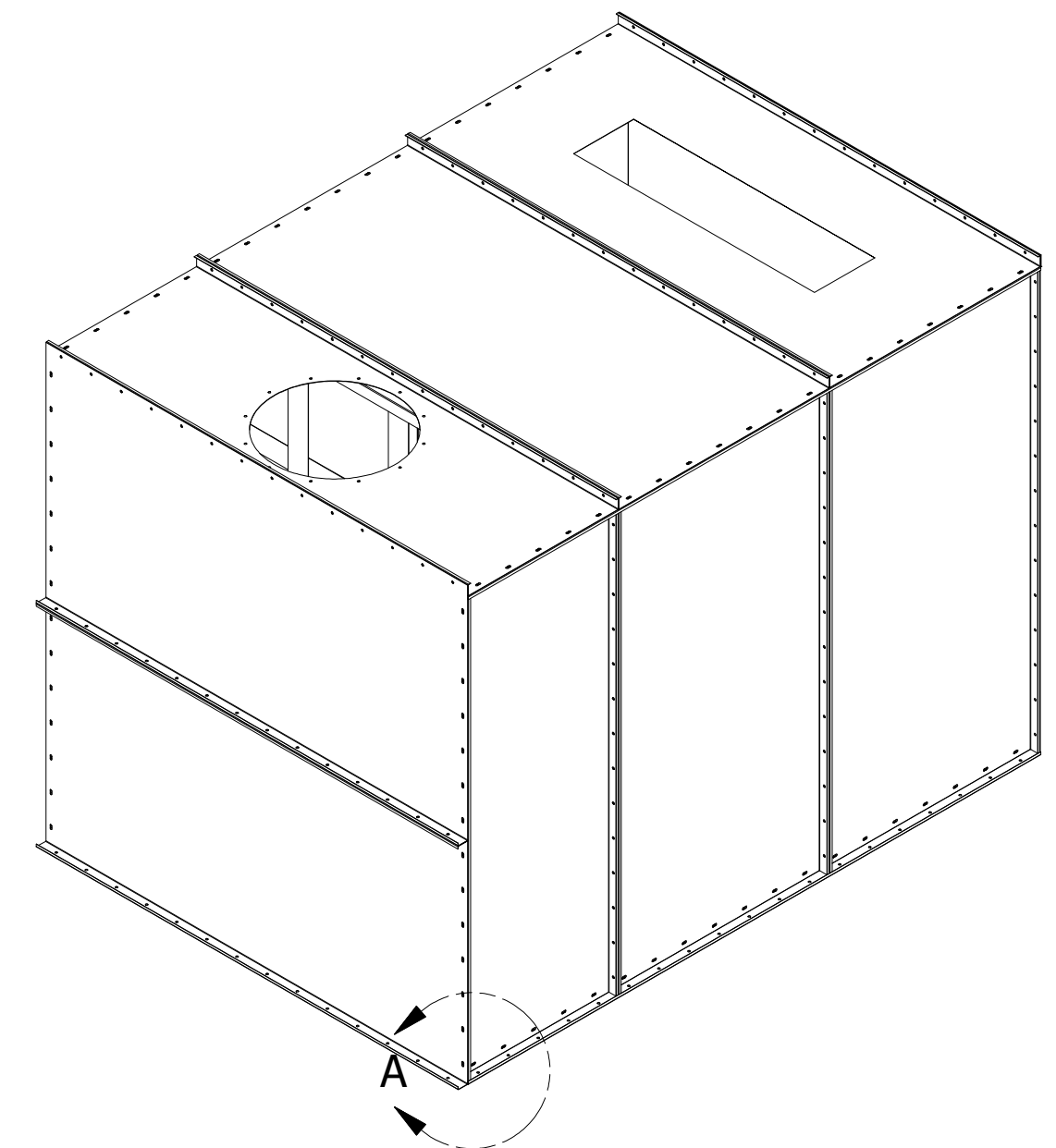
PLENUM COSIST OF:
 2 - VERTICAL PLENUM PANELS
 2 - HORIZONTAL PLENUM PANELS
 3 - 79.75 "T" DIVIDERS
 12 - 19.75 "T" DIVIDERS

FIRST FASTEN PLENUM PANELS TO SIDE WALLS USING SELF DRILLING SCREWS. FASTEN DIVIDERS TO PLENUM PANELS SPACING 20.00 APART ON CENTER AS SHOWN.

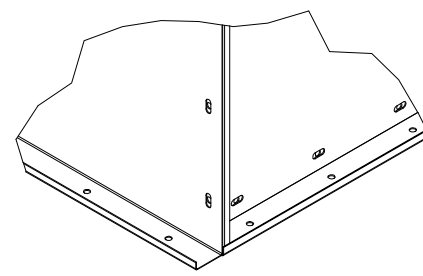
ALL PANELS ARE CONSTRUCTED FROM 16GA G90 GALVANIZED STEEL

DRAWN Tyler Cook	6/25/2013	JC METAL FABRICATION		
CHECKED		TITLE JCOFP777		
QA		SIZE C	DWG NO JCOFP777	REV A
MFG		SCALE .04		
APPROVED				SHEET 1 OF 2

PARTS LIST		
ITEM	QTY	PART NUMBER
A	6	42 X 84
B	2	30 X 84
C	1	30 X 84 FAN
D	1	44 X 84
E	1	42 X 84 LIGHT
F	2	HORIZONTAL PLENUM
G	2	VERTICAL PLENUM
H	4	114 TRIM
I	1	FIRE GAURD
J	12	19.75 DIVIDER
K	3	79.75 DIVIDER
L	1	FAN ASSEMBLY
M	1	FILTER BOX

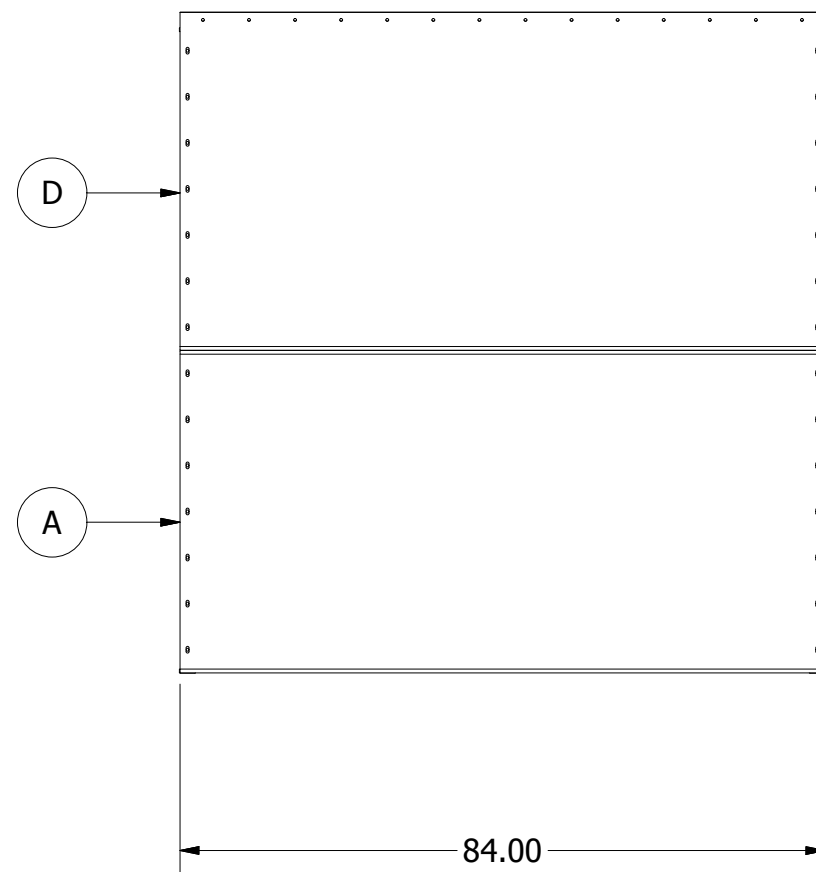


EXAMPLE OF REAR WALL PANELS INTERSECTION

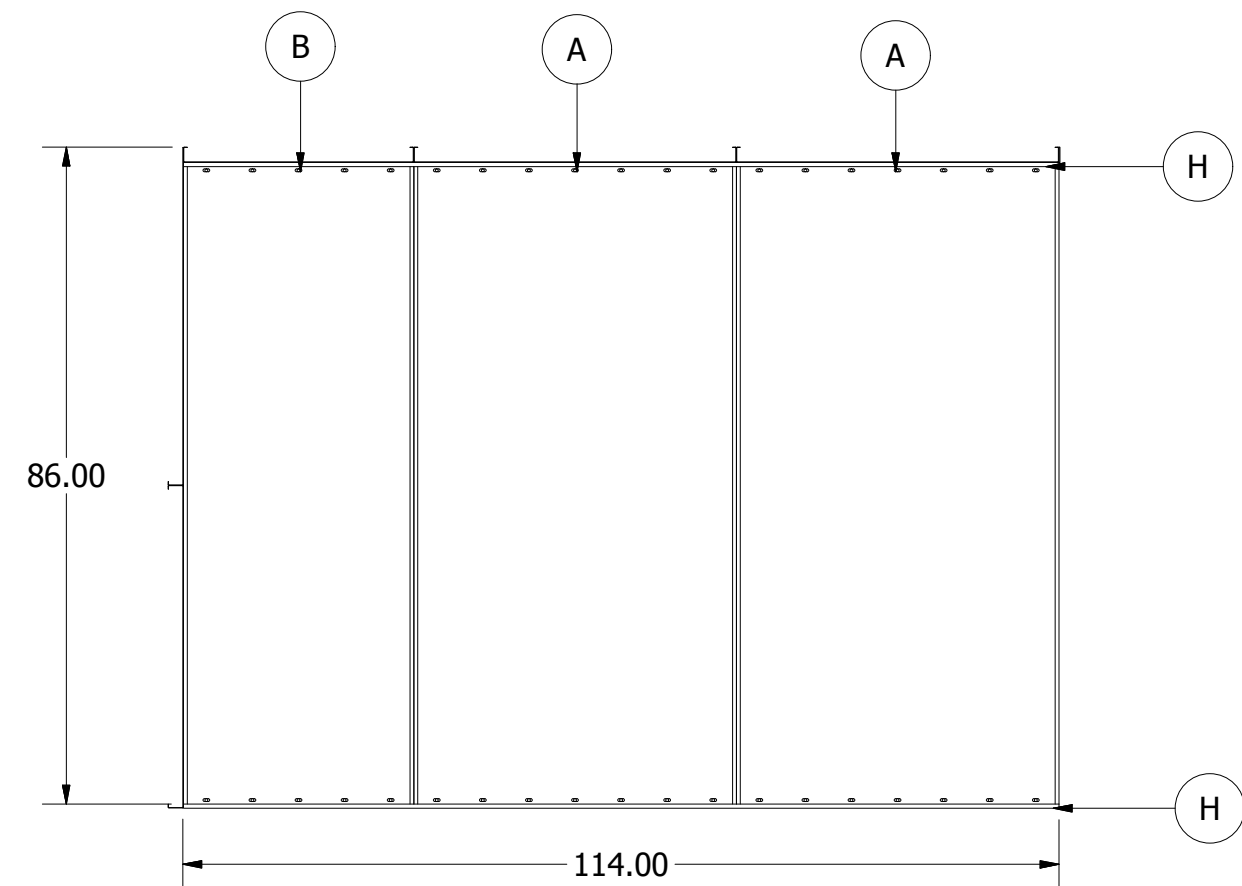


DETAIL A
SCALE .1

BACK



LEFT



PLENUM COSIST OF:
 2 - VERTICAL PLENUM PANELS
 2 - HORIZONTAL PLENUM PANELS
 3 - 79.75 "T" DIVIDERS
 12 - 19.75 "T" DIVIDERS

FIRST FASTEN PLENUM PANELS TO SIDE WALLS USING SELF DRILLING SCREWS. FASTEN DIVIDERS TO PLENUM PANELS SPACING 20.00 APART ON CENTER AS SHOWN.

ALL PANELS ARE CONSTRUCTED FROM 16GA G90 GALVANIZED STEEL

DRAWN Tyler Cook	6/25/2013	JC METAL FABRICATION	
CHECKED		TITLE JCOFP777	
QA		SIZE C	DWG NO JCOFP777
MFG		SCALE .04	REV A
APPROVED		SHEET 2 OF 2	