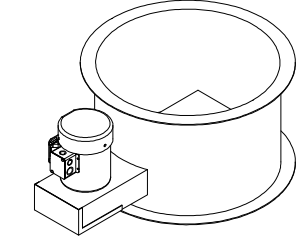
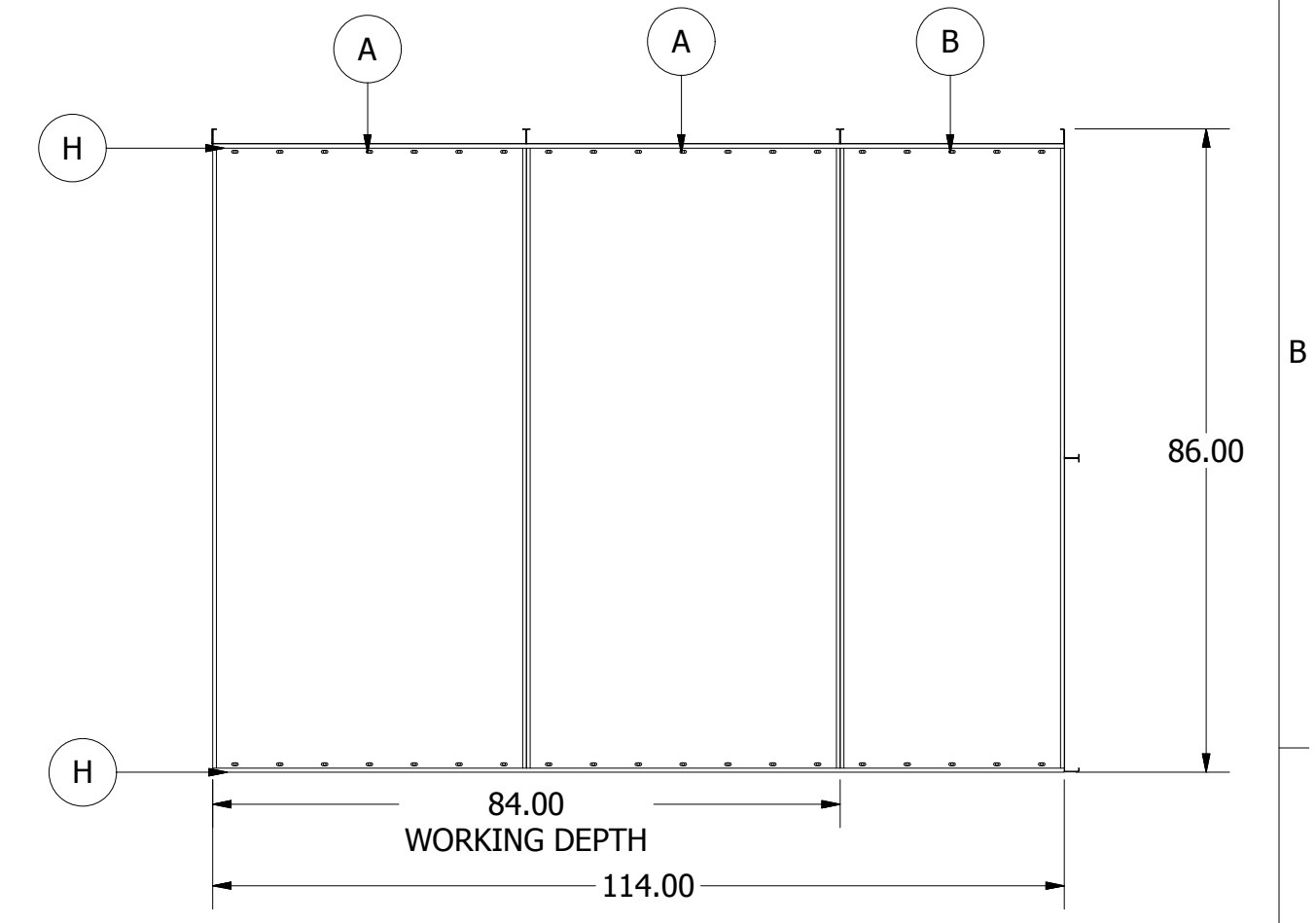
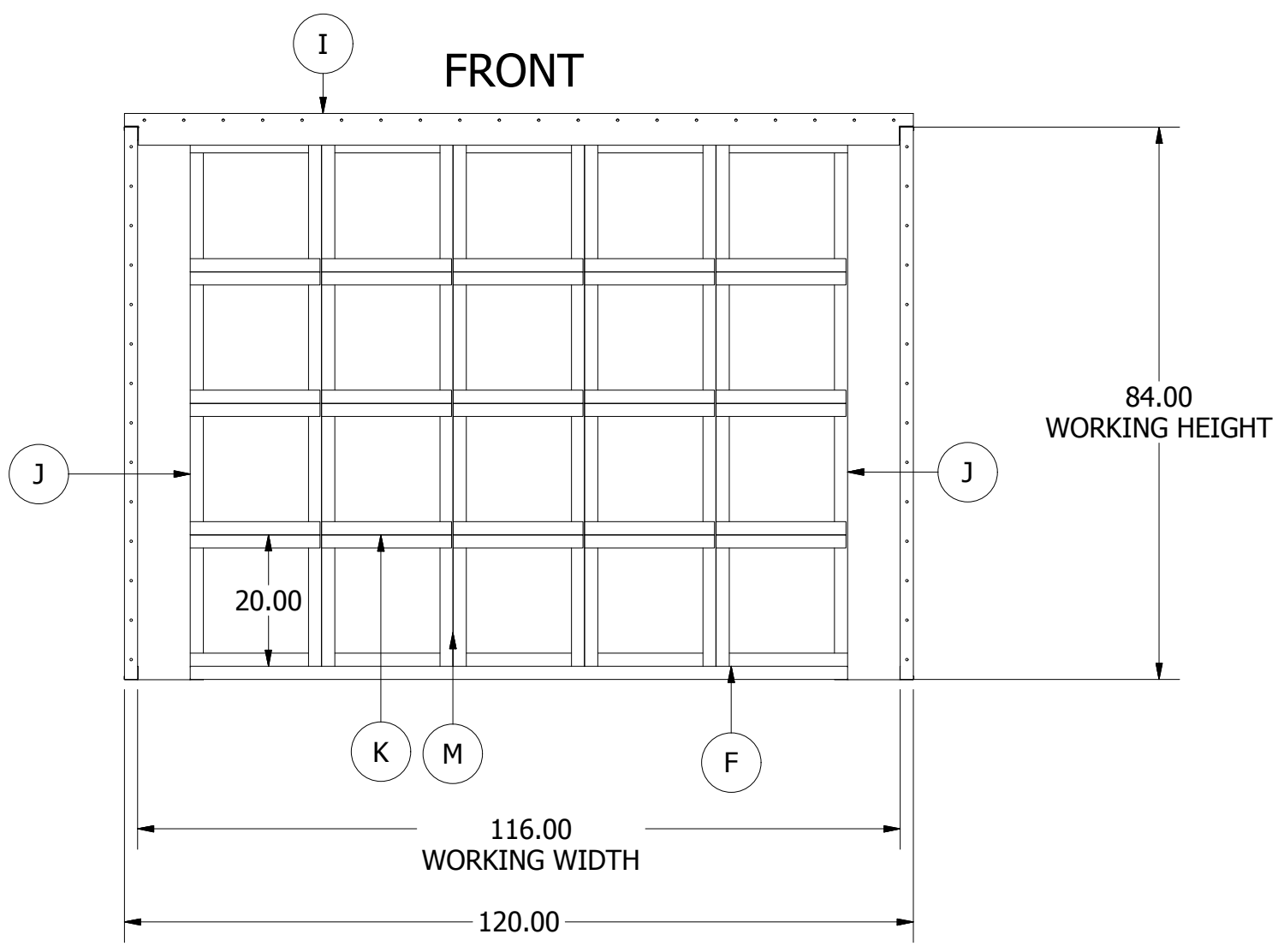
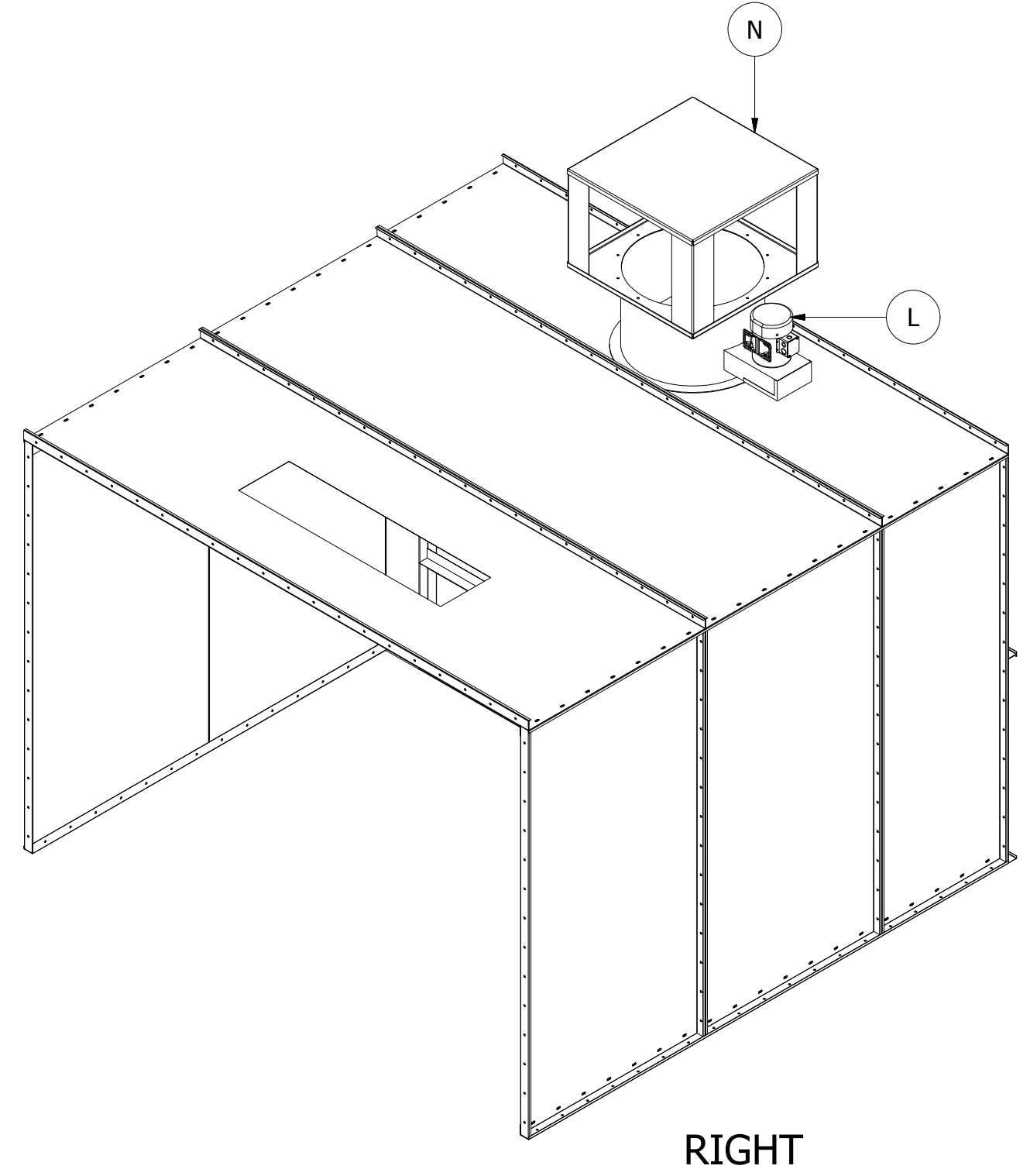
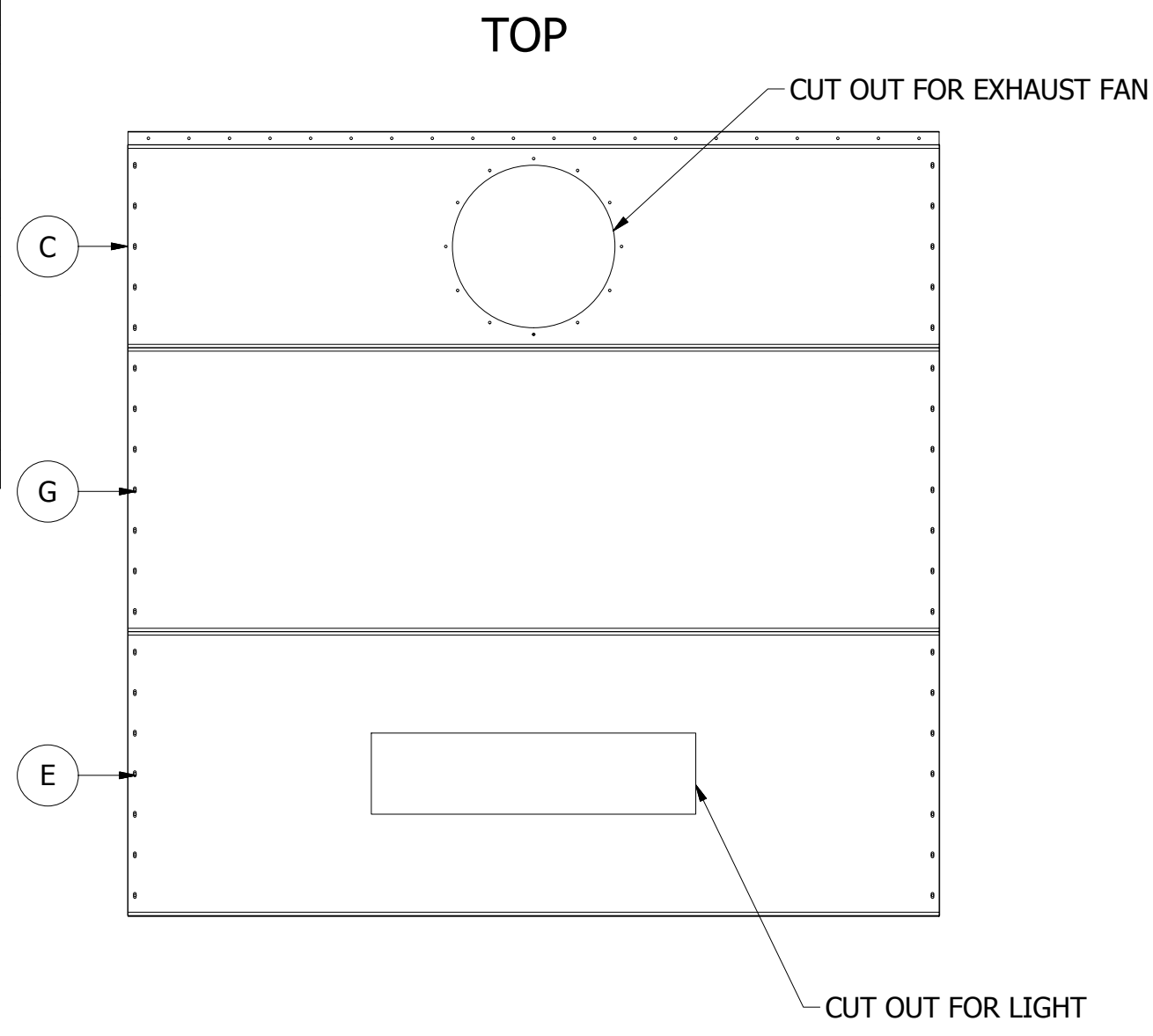
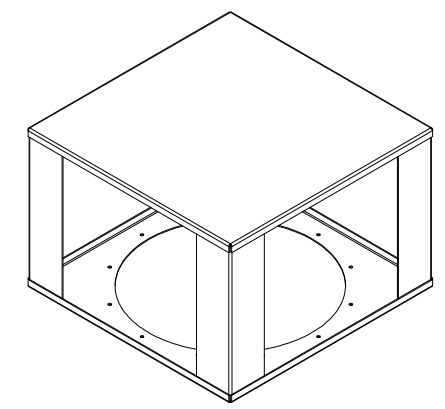


PARTS LIST		
ITEM	QTY	PART NUMBER
A	4	42 X 84
B	2	30 X 84
C	1	30 X 120 FAN
D	1	44 X 120
E	1	42 X 120 LIGHT
F	2	HORIZONTAL PLENUM
G	2	42 X 120
H	4	114 TRIM
I	1	120 FIRE GUARD
J	2	VERTICAL PLENUM
K	15	19.75 DIVIDER
L	1	FAN ASSEMBLY
M	4	79.75 DIVIDER
N	1	FILTER BOX



24" TUBE AXIAL FAN WITH TEFC MOTOR



EXHAUST FILTER BOX

PLENUM COSIST OF:
 2 - VERTICAL PLENUM PANELS
 2 - HORIZONTAL PLENUM PANELS
 4 - 79.75 "T" DIVIDERS
 15 - 19.75 "T" DIVIDERS

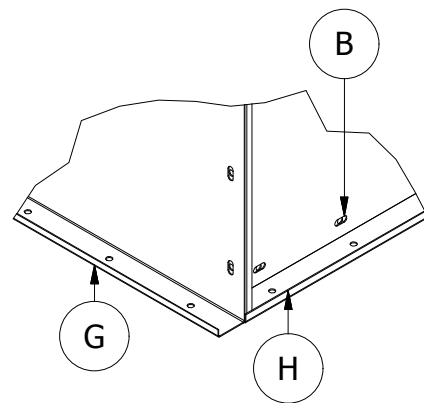
FIRST FASTEN PLENUM PANELS TO SIDE WALLS USING SELF DRILLING SCREWS. FASTEN DIVIDERS TO PLENUM PANELS SPACING 20.00 APART ON CENTER AS SHOWN.

ALL PANELS ARE CONSTRUCTED FROM 16GA G90 GALVANIZED STEEL

DRAWN Tyler Cook	6/25/2013	JC METAL FABRICATION		
CHECKED		TITLE JCOFNR1077		
QA		SIZE C	DWG NO JCOFNR1077	REV A
MFG		SCALE .04	SHEET 1 OF 2	
APPROVED				

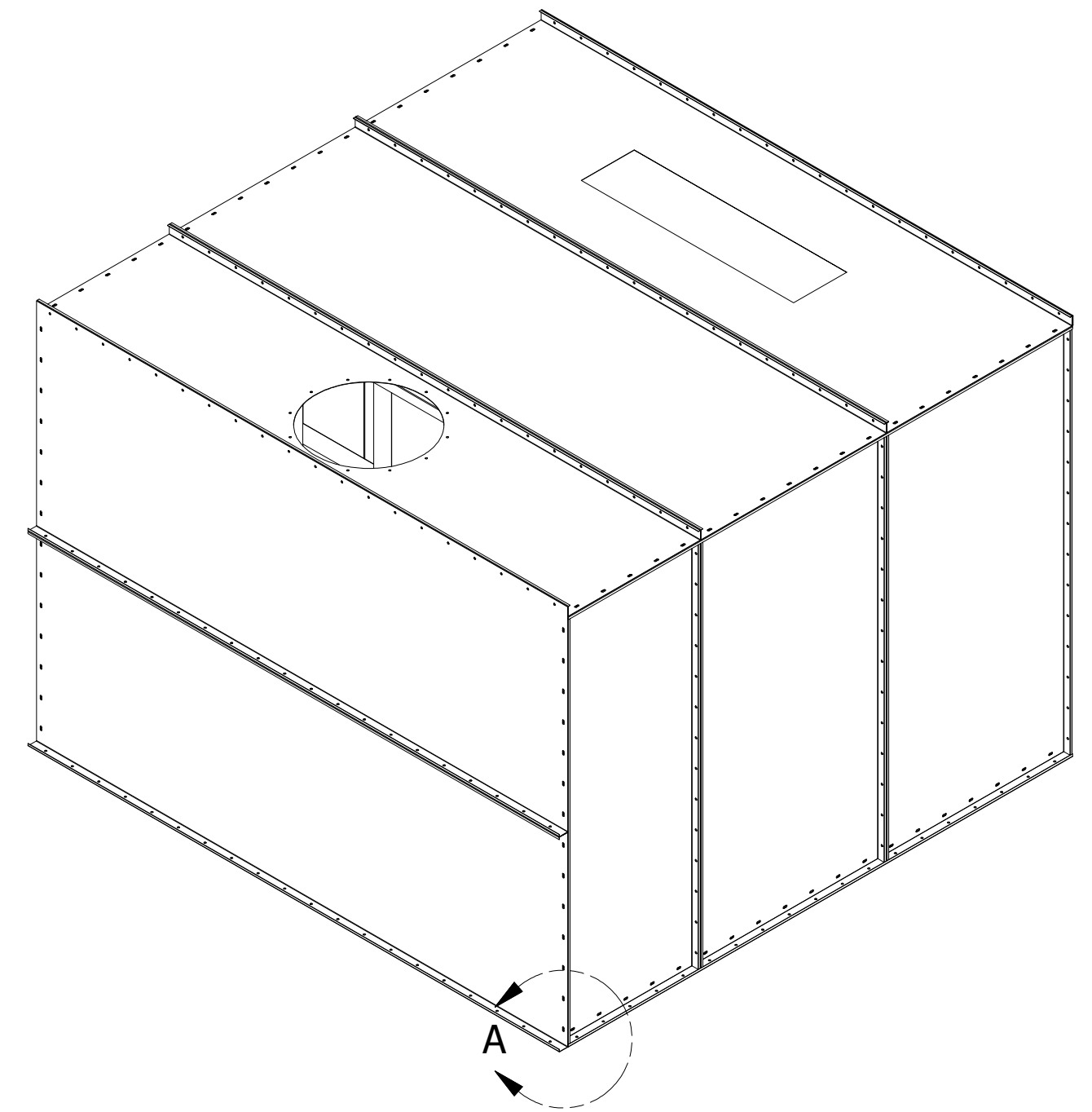
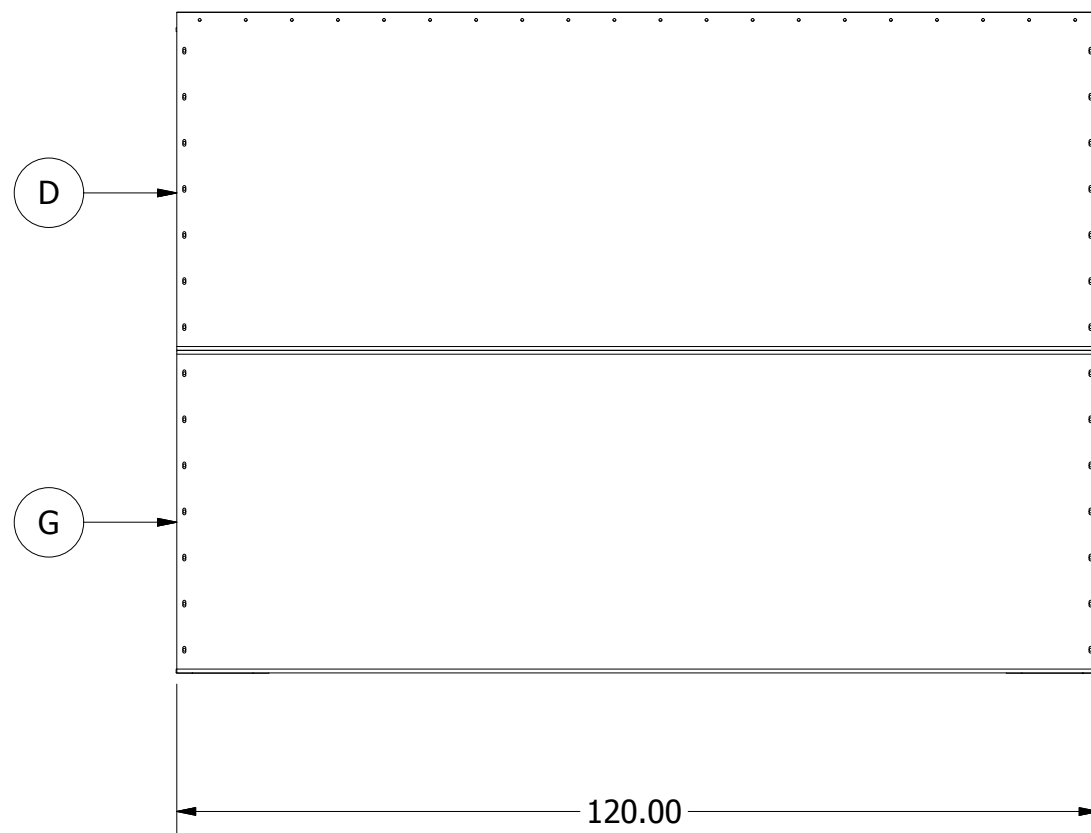
PARTS LIST		
ITEM	QTY	PART NUMBER
A	4	42 X 84
B	2	30 X 84
C	1	30 X 120 FAN
D	1	44 X 120
E	1	42 X 120 LIGHT
F	2	HORIZONTAL PLENUM
G	2	42 X 120
H	4	114 TRIM
I	1	120 FIRE GUARD
J	2	VERTICAL PLENUM
K	15	19.75 DIVIDER
L	1	FAN ASSEMBLY
M	4	79.75 DIVIDER
N	1	FILTER BOX

EXAMPLE OF REAR WALL PANELS INTERSECTION

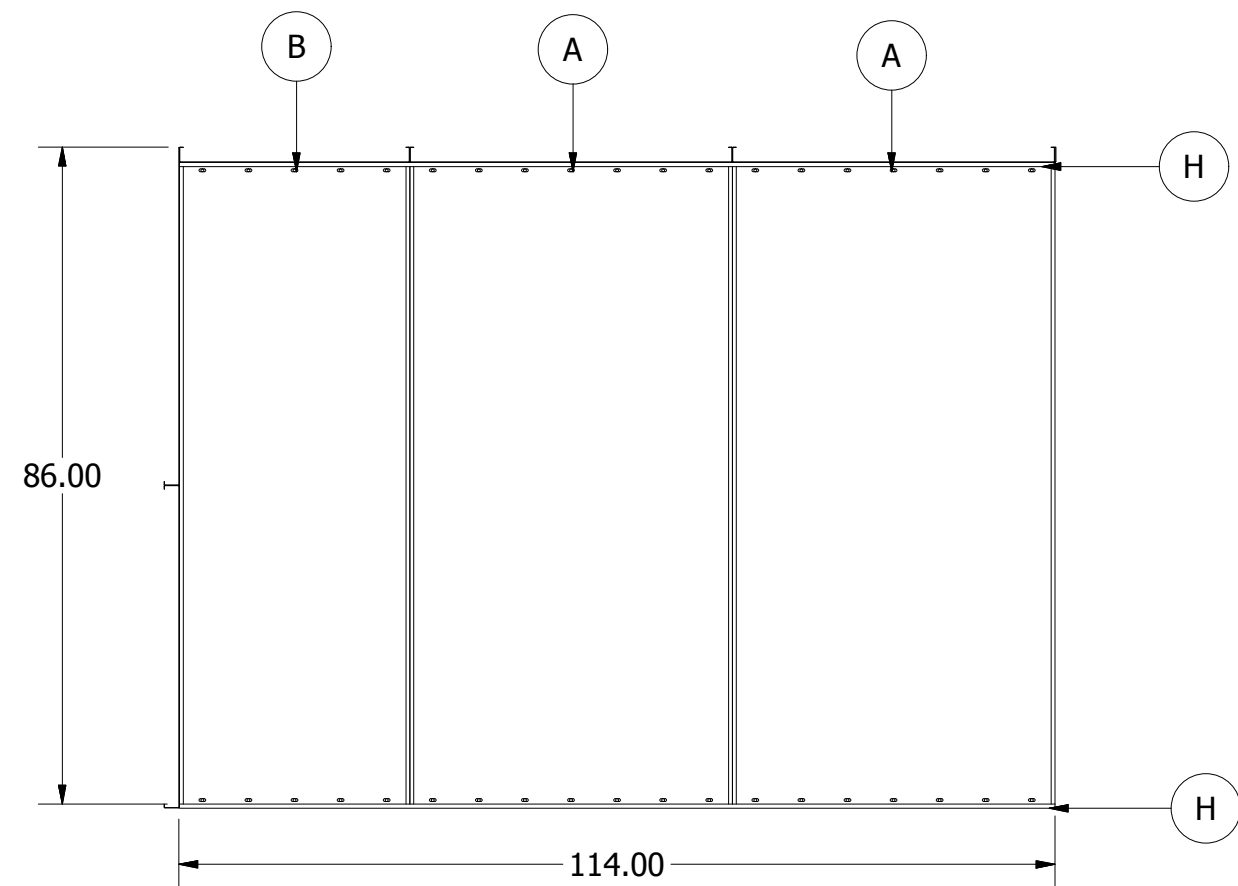


DETAIL A
SCALE .1

BACK



LEFT



PLENUM COSIST OF:
 2 - VERTICAL PLENUM PANELS
 2 - HORIZONTAL PLENUM PANELS
 4 - 79.75 "T" DIVIDERS
 15 - 19.75 "T" DIVIDERS

FIRST FASTEN PLENUM PANELS TO SIDE WALLS USING SELF DRILLING SCREWS. FASTEN DIVIDERS TO PLENUM PANELS SPACING 20.00 APART ON CENTER AS SHOWN.

ALL PANELS ARE CONSTRUCTED FROM 16GA G90 GALVANIZED STEEL

DRAWN Tyler Cook	6/25/2013	JC METAL FABRICATION	
CHECKED		TITLE JCOFNR1077	
QA		SIZE C	DWG NO JCOFNR1077
MFG		SCALE .04	REV A
APPROVED		SHEET 2 OF 2	