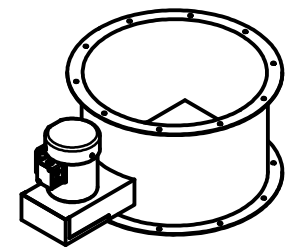
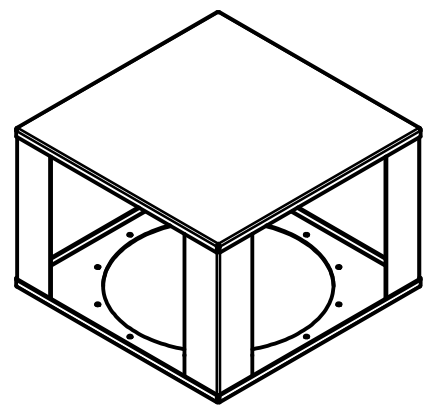


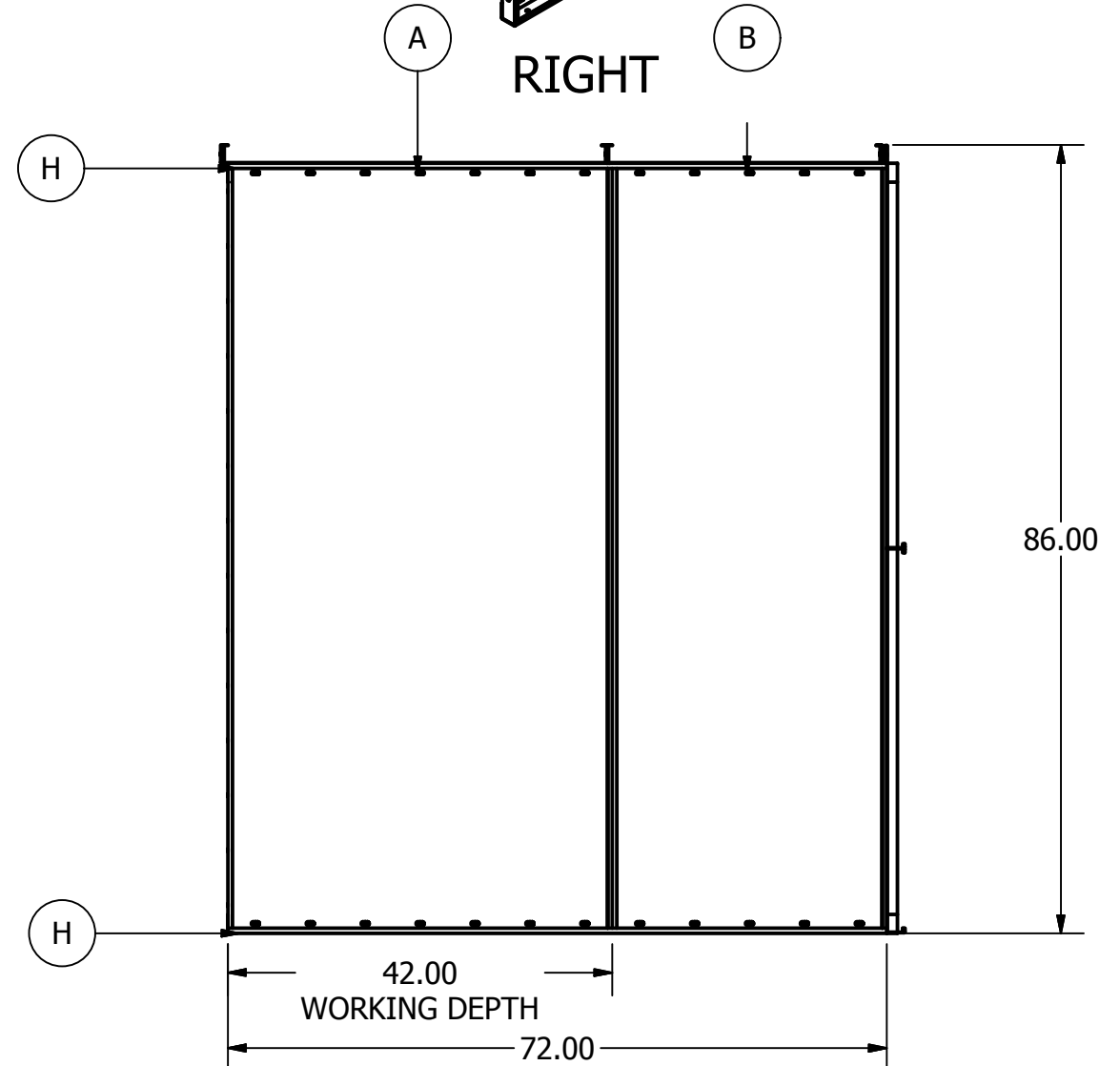
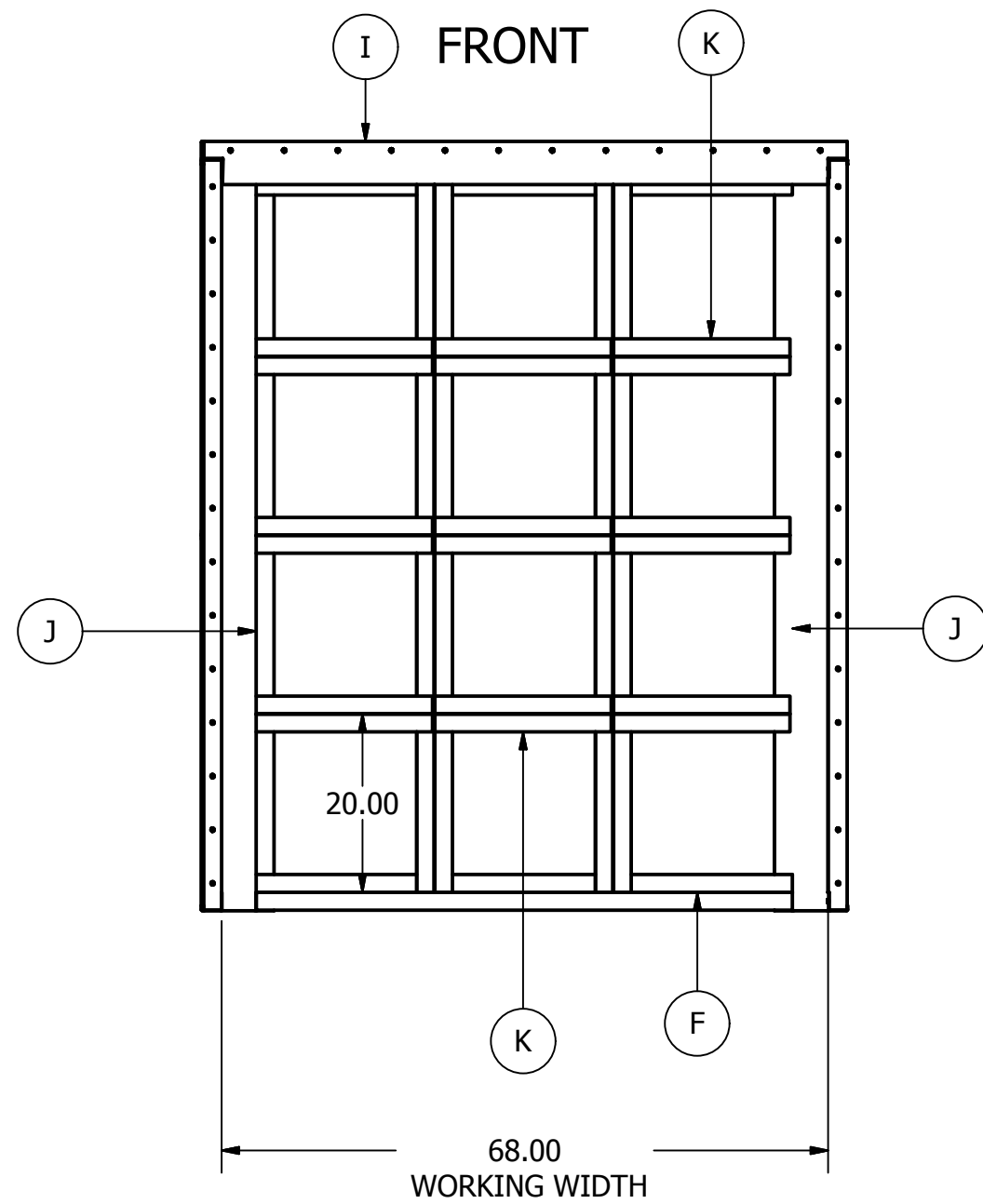
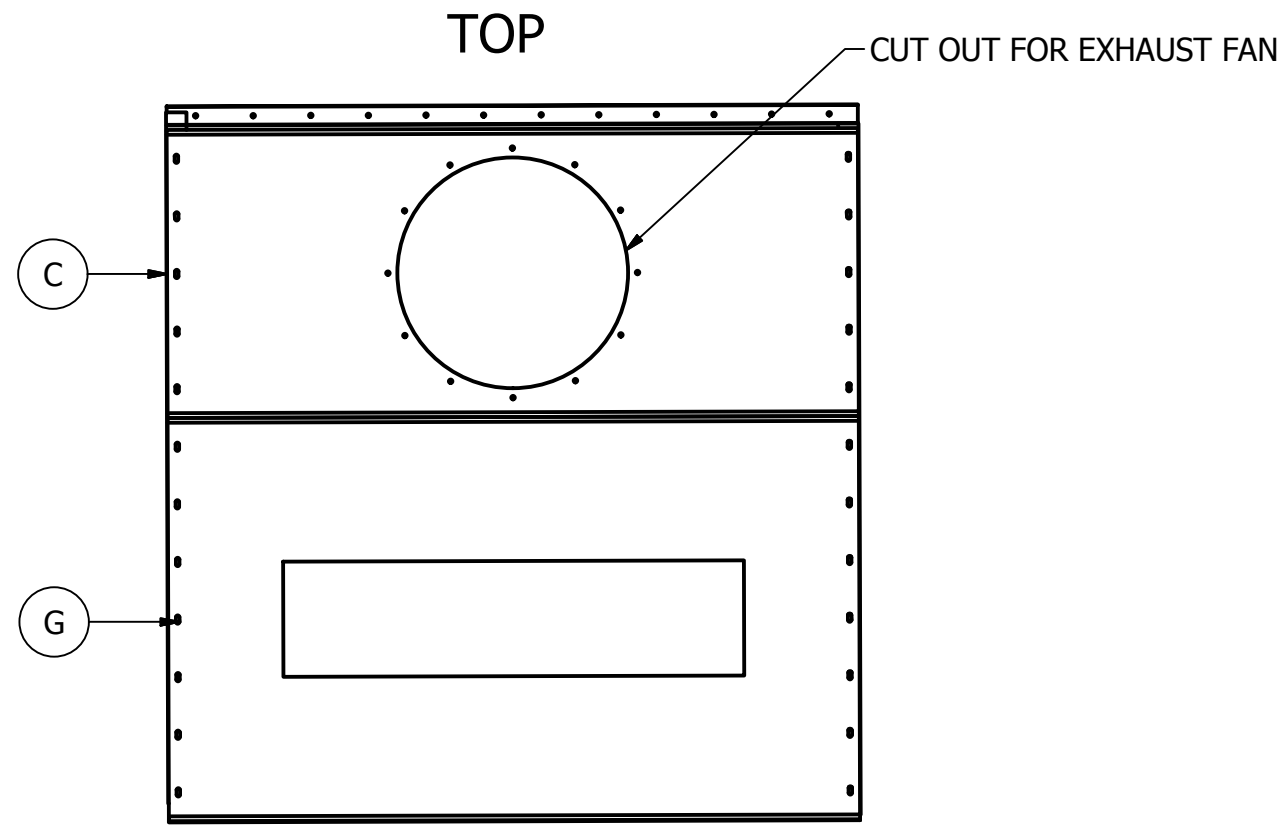
PARTS LIST		
ITEM	QTY	PART NUMBER
A	2	42 X 84
B	2	30 X 84
C	1	30 X 72 FAN
D	1	44 X 72
E	1	42 X 72
F	2	HORIZONTAL PLENUM
G	1	42 X 72 LIGHT
H	4	72 TRIM
I	1	72 FIRE GAURD
J	2	VERTICAL PLENUM
K	9	19.75 DIVIDER
L	1	FAN ASSEMBLY
M	2	79.75 DIVIDER
N	1	FILTER BOX



24" TUBE AXIAL FAN WITH TEFC MOTOR



EXHAUST FILTER BOX



PLENUM COSIST OF:
 2 - VERTICAL PLENUM PANELS
 2 - HORIZONTAL PLENUM PANELS
 2 - 79.75 "T" DIVIDERS
 9 - 19.75 "T" DIVIDERS

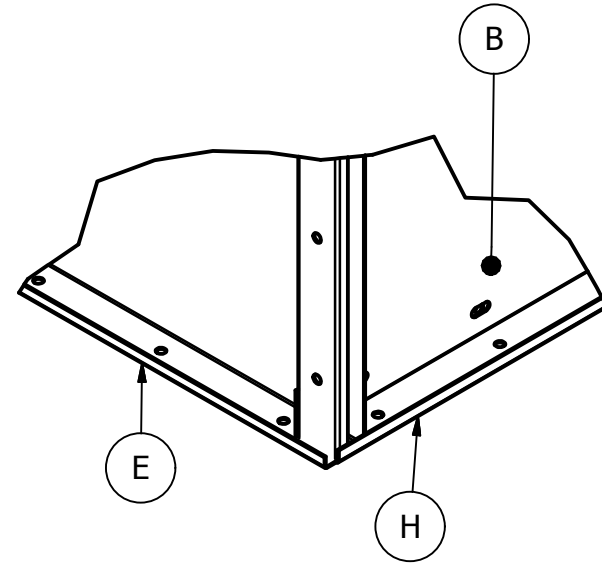
FIRST FASTEN PLENUM PANELS TO SIDE WALLS USING SELF DRILLING SCREWS. FASTEN DIVIDERS TO PLENUM PANELS SPACING 20.00 APART ON CENTER AS SHOWN.

ALL PANELS ARE CONSTRUCTED FROM 16GA G90 GALVANIZED STEEL

DRAWN Tyler Cook	6/25/2013	JC METAL FABRICATION		
CHECKED		TITLE JCOFNR1077		
QA		SIZE C	DWG NO JCOFNR6	REV A
MFG		SCALE .04	SHEET 1 OF 2	
APPROVED				

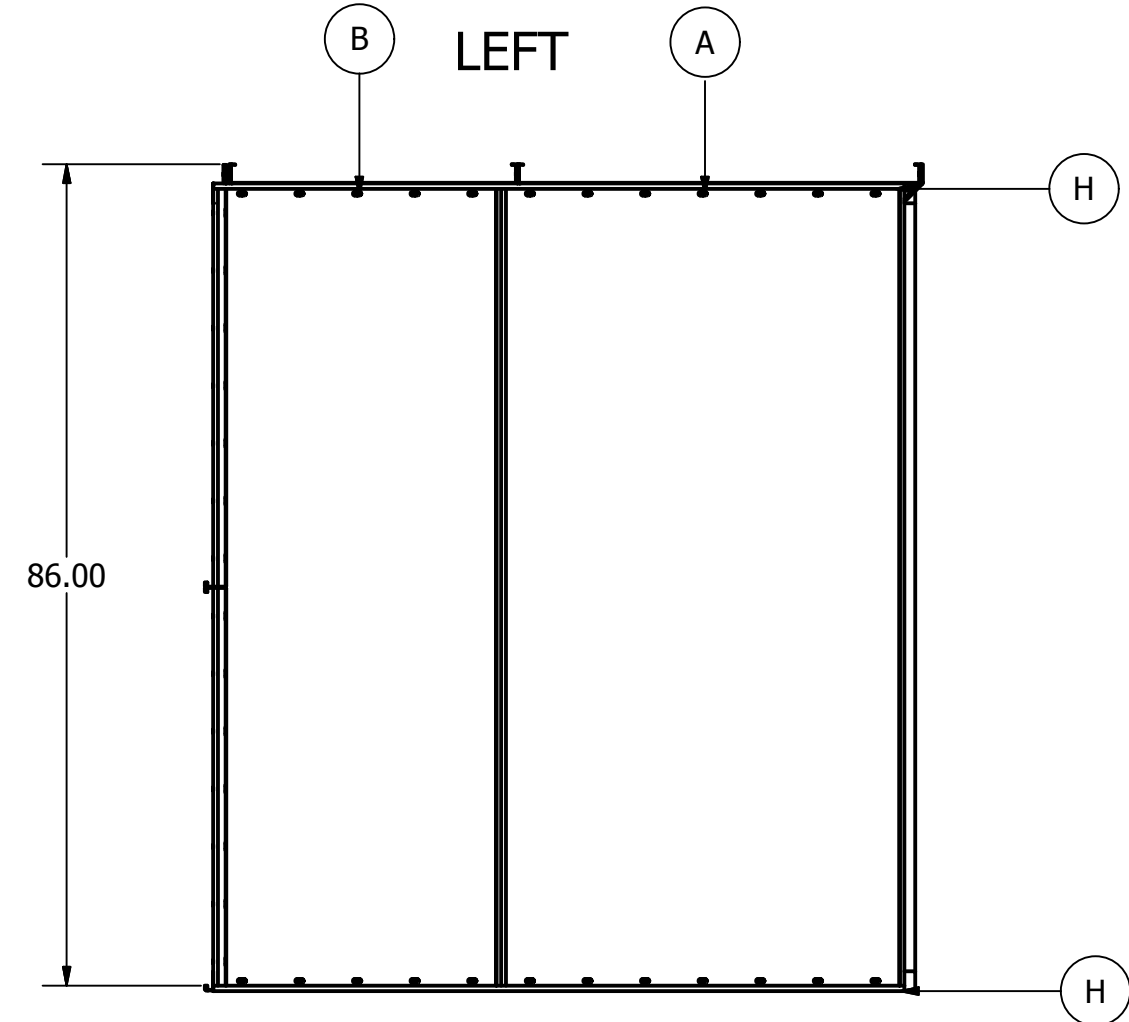
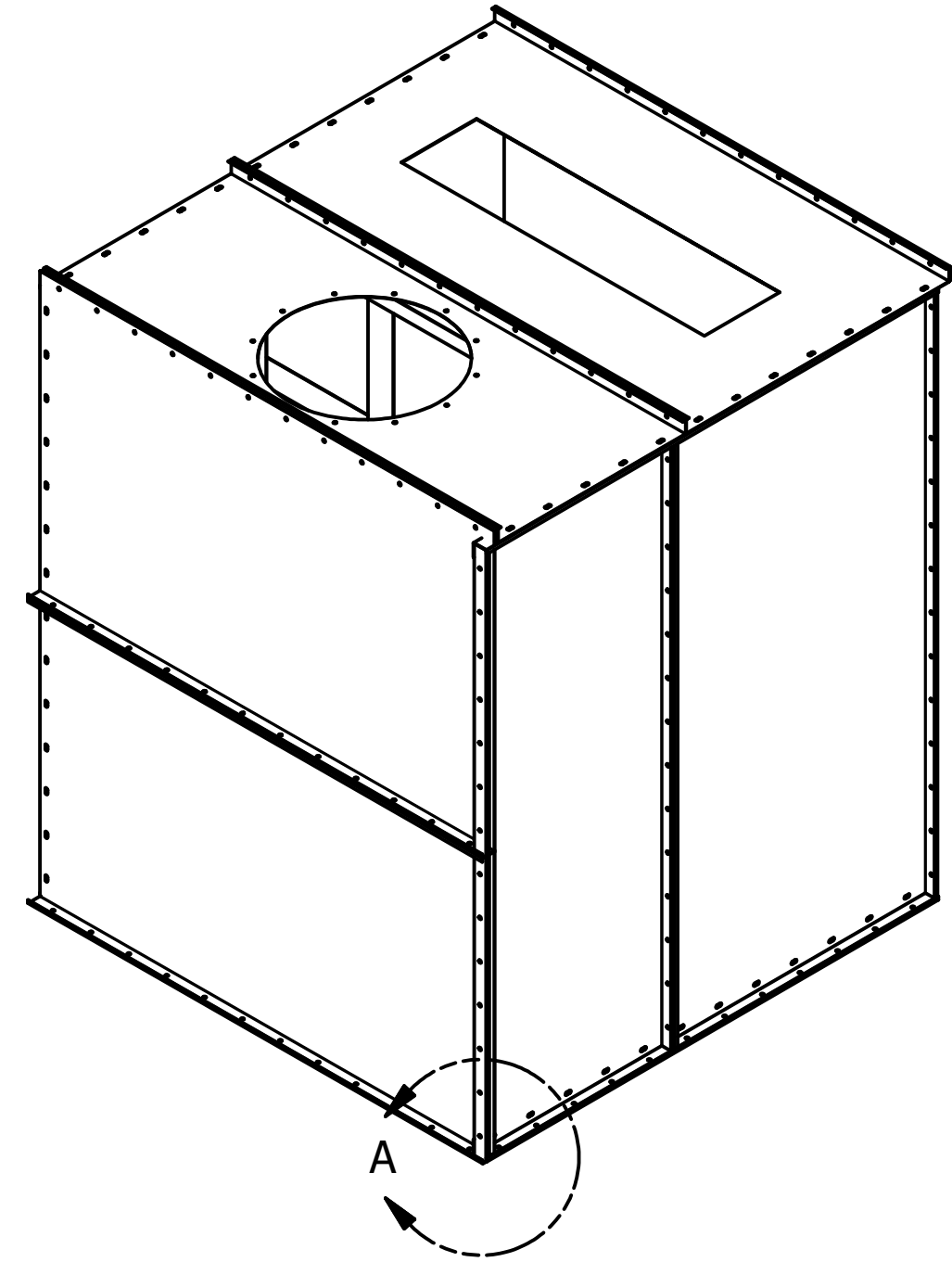
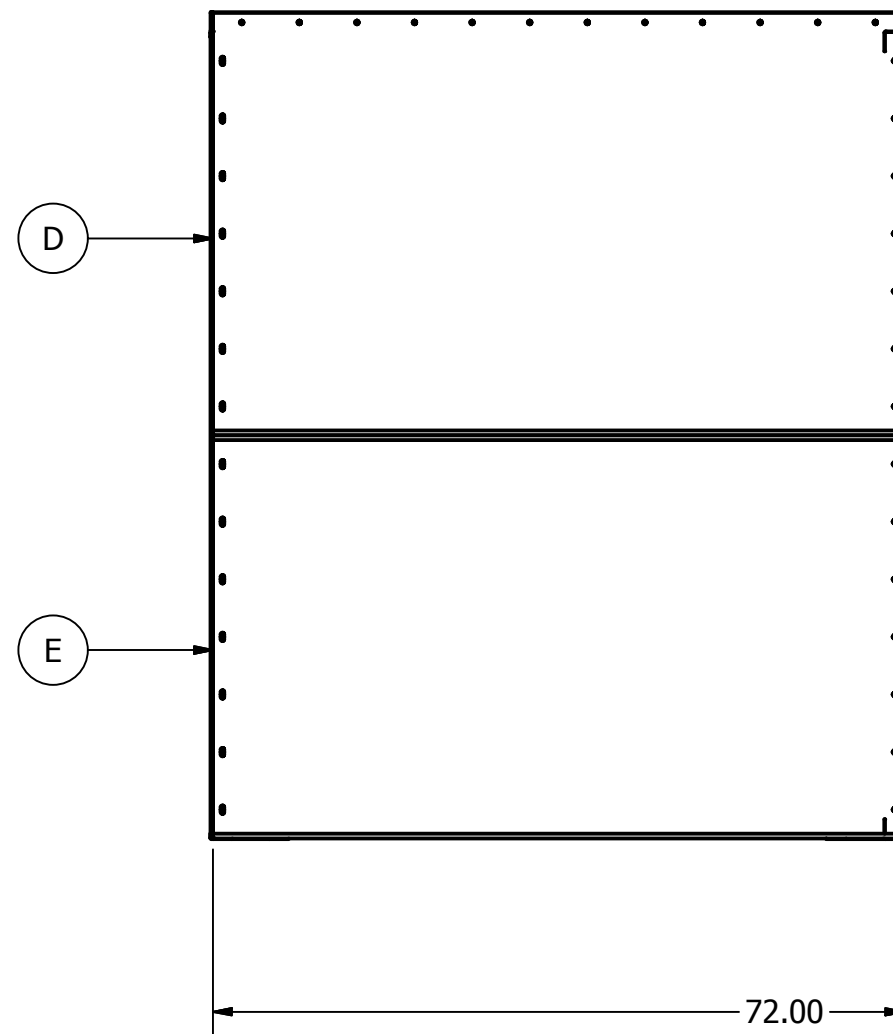
PARTS LIST		
ITEM	QTY	PART NUMBER
A	2	42 X 84
B	2	30 X 84
C	1	30 X 72 FAN
D	1	44 X 72
F	2	HORIZONTAL PLENUM
H	4	72 TRIM
I	1	72 FIRE GAURD
J	2	VERTICAL PLENUM
K	9	19.75 DIVIDER
L	1	FAN ASSEMBLY
M	2	79.75 DIVIDER
N	1	FILTER BOX
E	1	42 X 72
G	1	42 X 72 LIGHT

EXAMPLE OF REAR WALL PANELS INTERSECTION



DETAIL A
SCALE .15

BACK



PLENUM COSIST OF:
 2 - VERTICAL PLENUM PANELS
 2 - HORIZONTAL PLENUM PANELS
 4 - 79.75 "T" DIVIDERS
 15 - 19.75 "T" DIVIDERS

FIRST FASTEN PLENUM PANELS TO SIDE WALLS USING SELF DRILLING SCREWS. FASTEN DIVIDERS TO PLENUM PANELS SPACING 20.00 APART ON CENTER AS SHOWN.

ALL PANELS ARE CONSTRUCTED FROM 16GA G90 GALVANIZED STEEL

DRAWN Tyler Cook	6/25/2013	JC METAL FABRICATION	
CHECKED		TITLE JCOFNR1077	
QA		SIZE C	DWG NO JCOFNR6
MFG		SCALE .04	REV A
APPROVED		SHEET 2 OF 2	